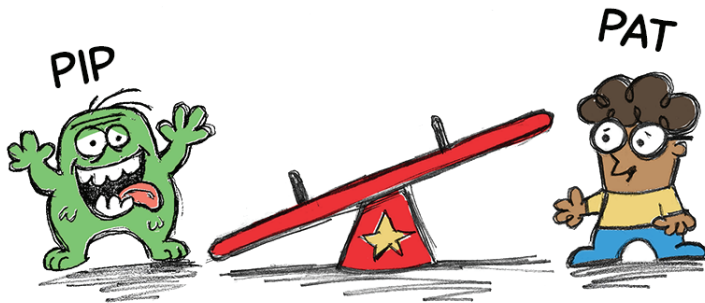


Name _____

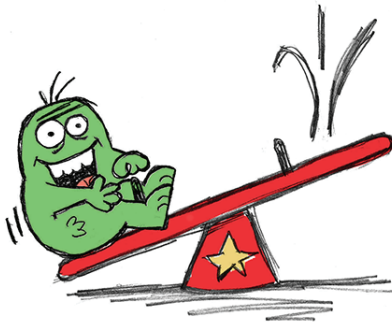
Date _____



Pip and Pat



Pip and Pat sit.



Pat?



Pat is on Pip.

Short-Vowel

- /ă/ spelled a (pat, and)
- /ĭ/ spelled i (pip, is, sit)
- /ŏ/ sound spelled o (on)

Consonant

- /d/ spelled d (and)
- /n/ sound spelled n (and, on)
- /p/ sound spelled p (pip, pat)
- /s/ sound spelled s (sit)
- /t/ sound spelled t (sit, pat)
- /z/ sound spelled s (is)