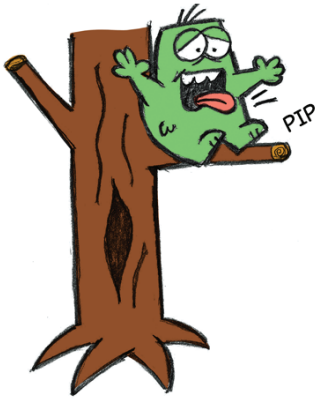


Name _____

Date _____



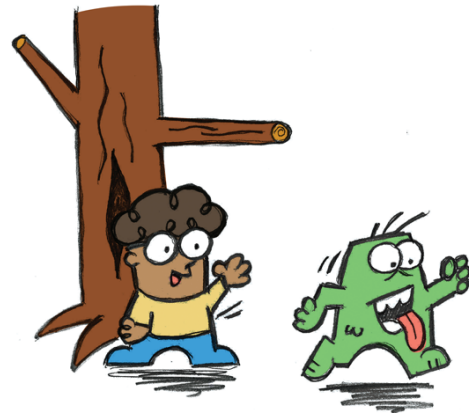
Pip is stuck in a tree.



Pat gets a box.



Pip gets down.



Go Pip go!

Short - Vowel

- /ĕ/ sound spelled e (gets)
- /ĭ/ sound spelled i (pip, is, in, kicks)
- /ŏ/ sound spelled o (box)
- /ŭ/ sound spelled u (stuck)

Long - Vowel

- /ē/ sound spelled ee (tree)
- /ō/ sound spelled o (go)

Vowel Diphthongs

- /ow/ sound spelled ow (down)

Consonant

- /b/ sound spelled b (box)
- /d/ sound spelled d (down)
- /g/ sound spelled g (gets, go)
- /k/ sound spelled ck (stuck)
- /ks/ sound spelled x (box)
- /n/ sound spelled n (in, down)
- /p/ sound spelled p (pip, pat)
- /s/ sound spelled s (stick, gets)
- /t/ sound spelled t (stuck, gets, pat)
- /z/ sound spelled s (is)